

International Symposium of Joint Research Network on Advanced Materials and Devices



“Chou”

MARCH 25 (THU) AND 26 (FRI), 2010, HOTEL-NIDOM, HOKKAIDO, JAPAN

CO-ORGANIZED BY

- Network Joint Research Center for Materials & Devices
- Post-Silicon Materials and Devices Research Alliance
- JSPS Invitational Training Program for Advanced Japanese Research Institutes
- 11th RIES-Hokudai International Symposium

ORGANIZING CHAIR

Takeharu NAGAI (Hokkaido Univ.)

ORGANIZING COMMITTEE

Keiji SASAKI (Hokkaido Univ.)

Hiroaki MISAWA (Hokkaido Univ.)

Nobuyuki TAMAOKI (Hokkaido Univ.)

Tamiki KOMATSUZAKI (Hokkaido Univ.)

Ken-ichi NIIKURA (Hokkaido Univ.)

Kosei UENO (Hokkaido Univ.)

Seiji TAKAGI (Hokkaido Univ.)

Tomomi TANI (Hokkaido Univ.)

SECRETARIES

Mimi TAKAHASHI

Miya KIKUCHI

Chie HAIKATA

Maki TANI

Kiyo SASAKI

Arisa HIRADE

Kayo ABE

Yoichi ISEYA

Yoshikazu TSUCHIDA

Kentaro KOBAYASHI

ACKNOWLEDGMENT

This symposium was made possible by financial support from Nikon Instech.Co.,Ltd.

PROGRAM

MARCH 25, 2010

- 11:00 Buses leave Hokkaido University for Hotel Nidom
12:15 Buses leave New Chitose International Airport for Hotel Nidom
12:30 Registration opens

OPENING REMARKS (*Room Ehureppo*)

- 13:00 – 13:05 Dr. Akihito Yamaguchi (Director, ISIR, Osaka Univ.)
13:05 – 13:10 Dr. Takeharu Nagai (Chair, Organizing Committee, Hokkaido Univ.)

SESSION I “NANO & PHOTONICS” (*Room Ehureppo*)

Chaired by Dr. Kunihiro Ijiro (Hokkaido Univ.)

- 13:10 – 13:55 Dr. Paul LEIDERER (Univ. Konstanz) **S1-1**
Optical Near-Fields of Nanostructures and their Use for Nanopatterning
- 13:55 – 14:35 Dr. Takuo TANAKA (RIKEN) **S1-2**
Towards Three-Dimensional Plasmonic Metamaterials
- 14:35 – 15:05 Dr. Tomokazu IYODA (Tokyo Institute of Technology) **S1-3**
Block Copolymer Templating Processes for Highly Ordered Nanostructured Materials
- 15:05 – 15:35 Dr. Jyunji NISHII (Hokkaido Univ.) **S1-4**
Photonic Functions Fabricated by Subwavelength Optics

- 15:35 – 15:50 Coffee break

POSTER SESSION (*Room Topeni*)

P-1~P-54

- 15:35 – 15:50 **Poster set up**
15:50 – 18:00 **Poster presentation**

SPECIAL LECTURE (*Room Ehureppo*)

Chaired by Dr. Akihito Yamaguchi, (Osaka Univ.)

- 18:00 – 18:55 Dr. Osamu SHIMOMURA (Marine Biological Laboratory) **SL**
How aequorin, GFP and glonin were discovered

BANQUET (*Room Ninkur*)

- 19:00 – 21:00

MARCH 26, 2010

BREAKFAST

7:00 – 8:30

POSTER TEAR DOWN

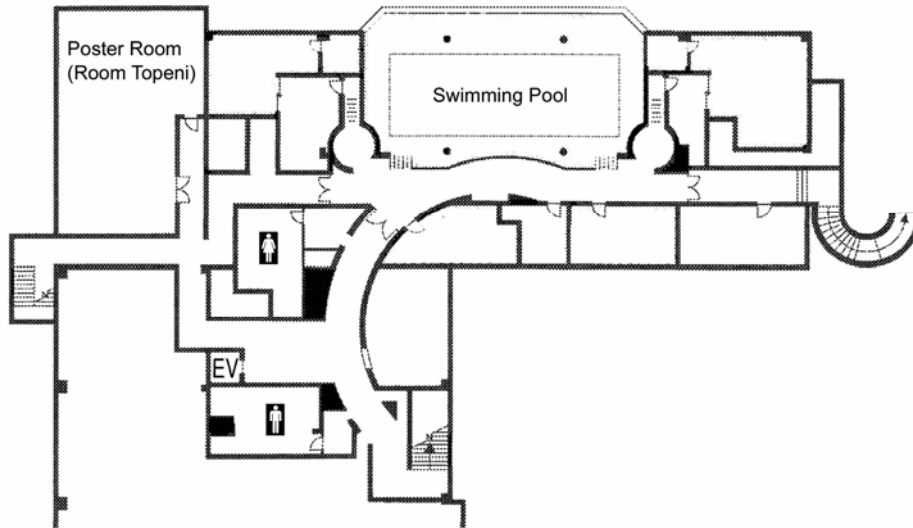
7:00 – 8:30

SESSION II	“SMART MOLECULAR SYSTEM” (<i>Room Ehureppo</i>) <i>Chaired by Drs. Nobuyuki Tamaoki and Ken-ichi Niikura (Hokkaido Univ.)</i>	
8:30 – 9:15	<u>Dr. A Prasanna DE SILVA</u> (Queen’s Univ. Belfast) 2010: A Small Space Odyssey with Luminescent Molecules	S2-1
9:15 – 9:55	<u>Dr. Itaru HAMACHI</u> (Kyoto Univ.) Selective Chemical Labeling and Engineering of Endogenous Proteins in Test Tube, in Cell and in Vivo	S2-2
9:55 – 10:30	<u>Dr. Masatsugu SHIMOMURA</u> (Tohoku Univ.) Novel Biomimetic Surface Materials Based on Self-organized Honeycomb-Patterned Polymer Films	S2-3
10:30 – 11:00	<u>Dr. Nobuyuki TAMAOKI</u> (Hokkaido Univ.) A Light Controlled Molecular Brake with Complete ON-OFF Rotation	S2-4
11:00 – 11:15	Coffee break	
SESSION III	“CARVING OUT A FUTURE WITH NEW TECHNOLOGIES TO ELUCIDATE BIOLOGICAL ENIGMA” (<i>Room Ehureppo</i>) <i>Chaired by Drs. Takeharu Nagai and Tomomi Tani (Hokkaido Univ.)</i>	
11:15 – 11:55	<u>Dr. Yoshihiro OHMIYA</u> (AIST) Basic and Application of Luciferases for Bioluminescence Imaging	S3-1
11:55 – 12:30	<u>Dr. Satoru KIDOAKI</u> (Kyushu Univ.) Development of Micropatterned Elastic Gels to Control Cell Mechanotaxis and Motility-Related Functions	S3-2
LUNCHON SEMINAR (NIKON) (<i>Room Ehureppo</i>)		
12:30 – 13:00	<u>Dr. Hiroyuki NOJI</u> (Osaka Univ.) Imaging of Intracellular ATP Using FRET-Based Indicators	L-1

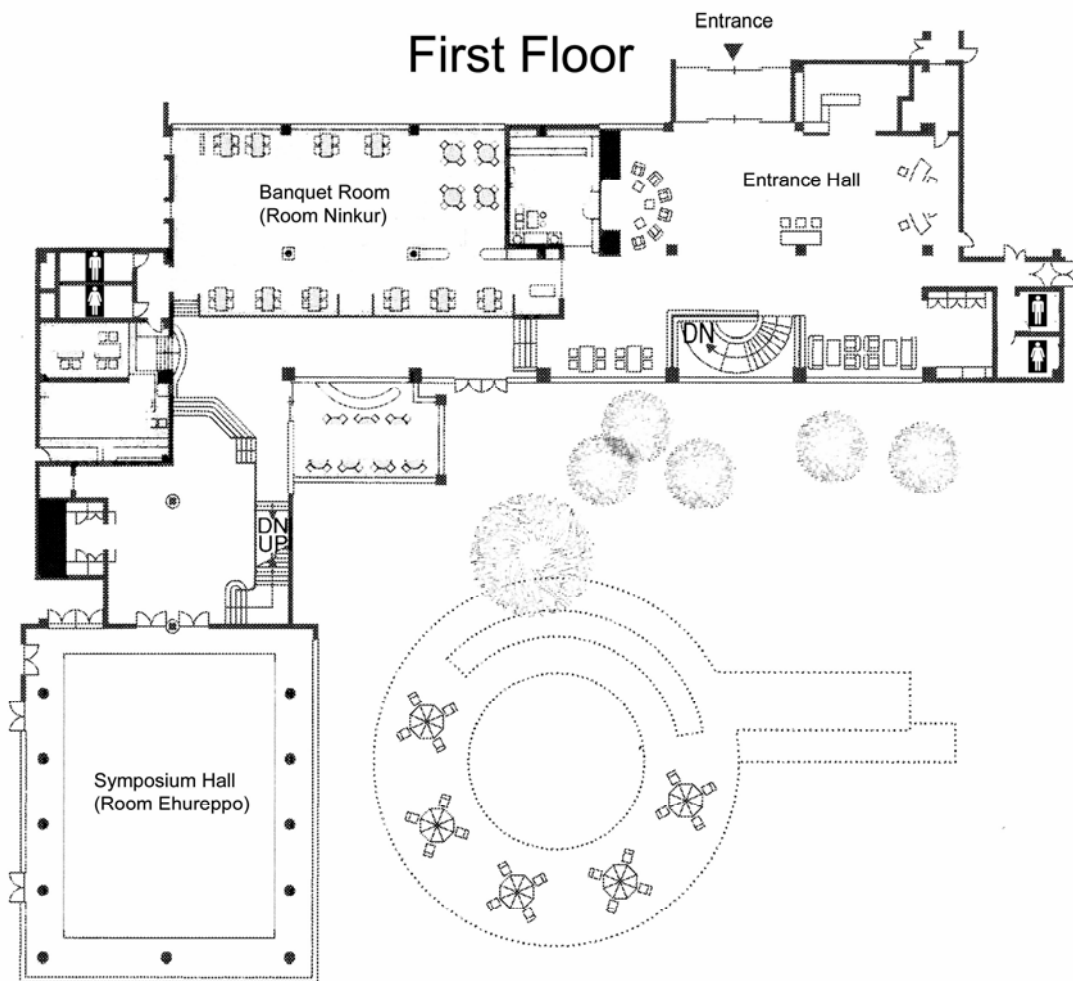
13:00 – 13:20	<u>Mr. Yoshiro OIKAWA</u> (Nikon) The Latest Technologies with Optical Bio Imaging; from High-speed Confocal to Super Resolution Microscope	L-2
SESSION III	(continued)	
13:20 – 13:50	<u>Dr. Tomomi NEMOTO</u> (Hokkaido Univ.) Two-photon Microscopic Analysis of Secretion and Fine Intracellular Structure of Living Cell	S3-3
13:50 – 14:00	Coffee break	
SESSION IV	“THEORY MEETS EXPERIMENTS AND VICE VERSA” <i>(Room Ehureppo)</i> <i>Chaired by Dr. Seiji Takagi (Hokkaido Univ.)</i>	
14:00 – 14:30	<u>Dr. Tamiki KOMATSUZAKI</u> (Hokkaido Univ.) Extracting a Multidimensional Free Energy Landscape from a Scalar Single-Molecule Time Series	S4-1
14:30 – 15:05	<u>Dr. Takashi WASHIO</u> (Osaka Univ.) Estimating States and Process of a Complex System from Sparse Samples	S4-2
15:05 – 15:45	<u>Dr. Hiroaki TAKAGI</u> (Nara Medical Univ.) Cellular Sensing Strategy Based on Spontaneous Migration Revealed Under Electrotaxis in <i>Dictyostelium</i> Cells	S4-3
15:45 – 16:30	<u>Dr. Michel PEYRARD</u> (ENS-Lyon) Using UV Bi-photon Excitation to Add a Dimension to DNA Melting Curves: Experimental and Theoretical Studies of Sequence Effects on the Fluctuation and Melting of Short DNA Molecules	S4-4
CLOSING REMARKS		
16:30 – 16:40	Dr. Hiroaki Misawa (Director, RIES, Hokkaido Univ.)	
16:50	Buses leave Hotel Nidom for New Chitose International Airport	
16:50	Buses leave Hotel Nidom for Hokkaido University	

Hotel-Nidom Center House Floor Plan

Ground Floor



First Floor



NIDOM-MAP

